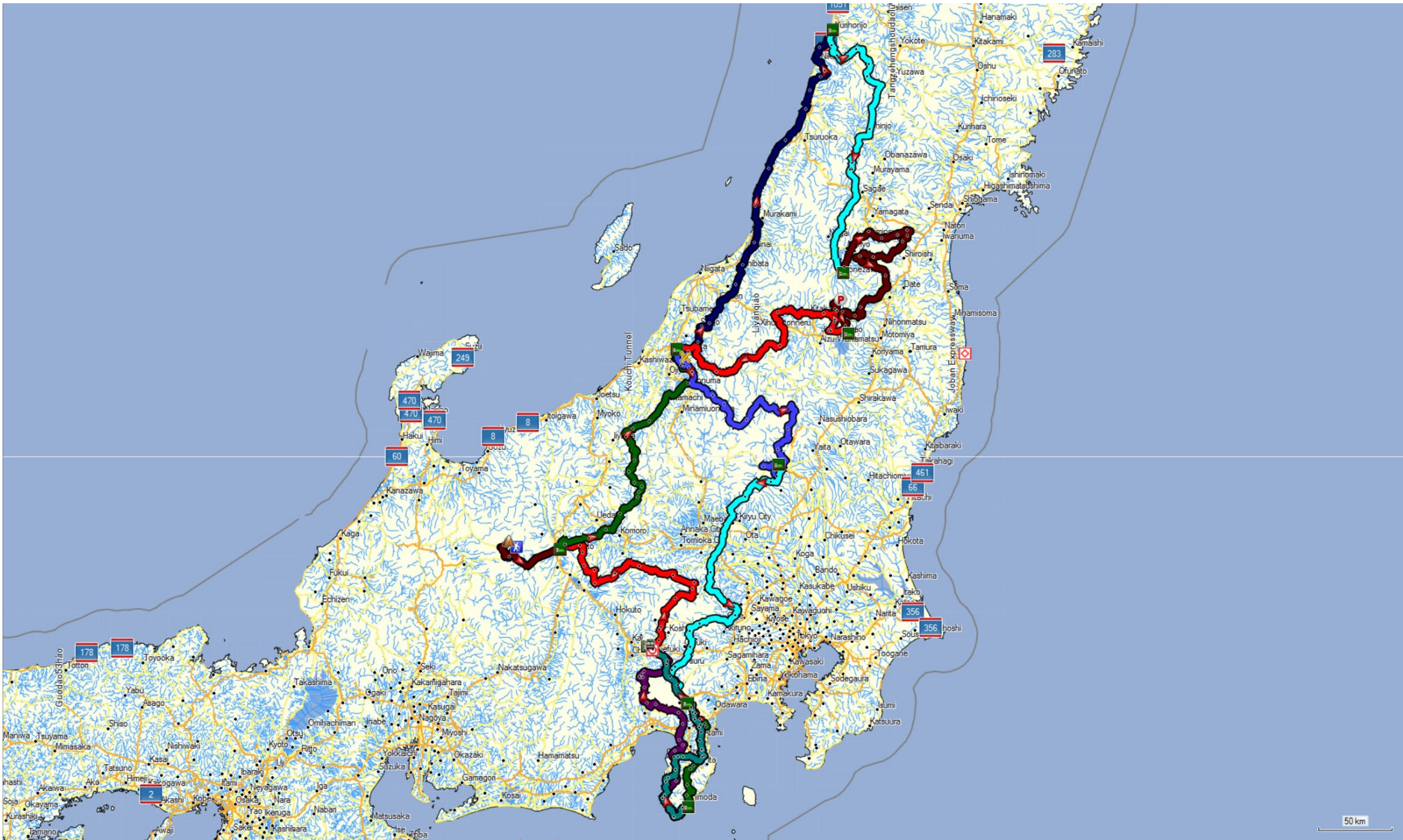


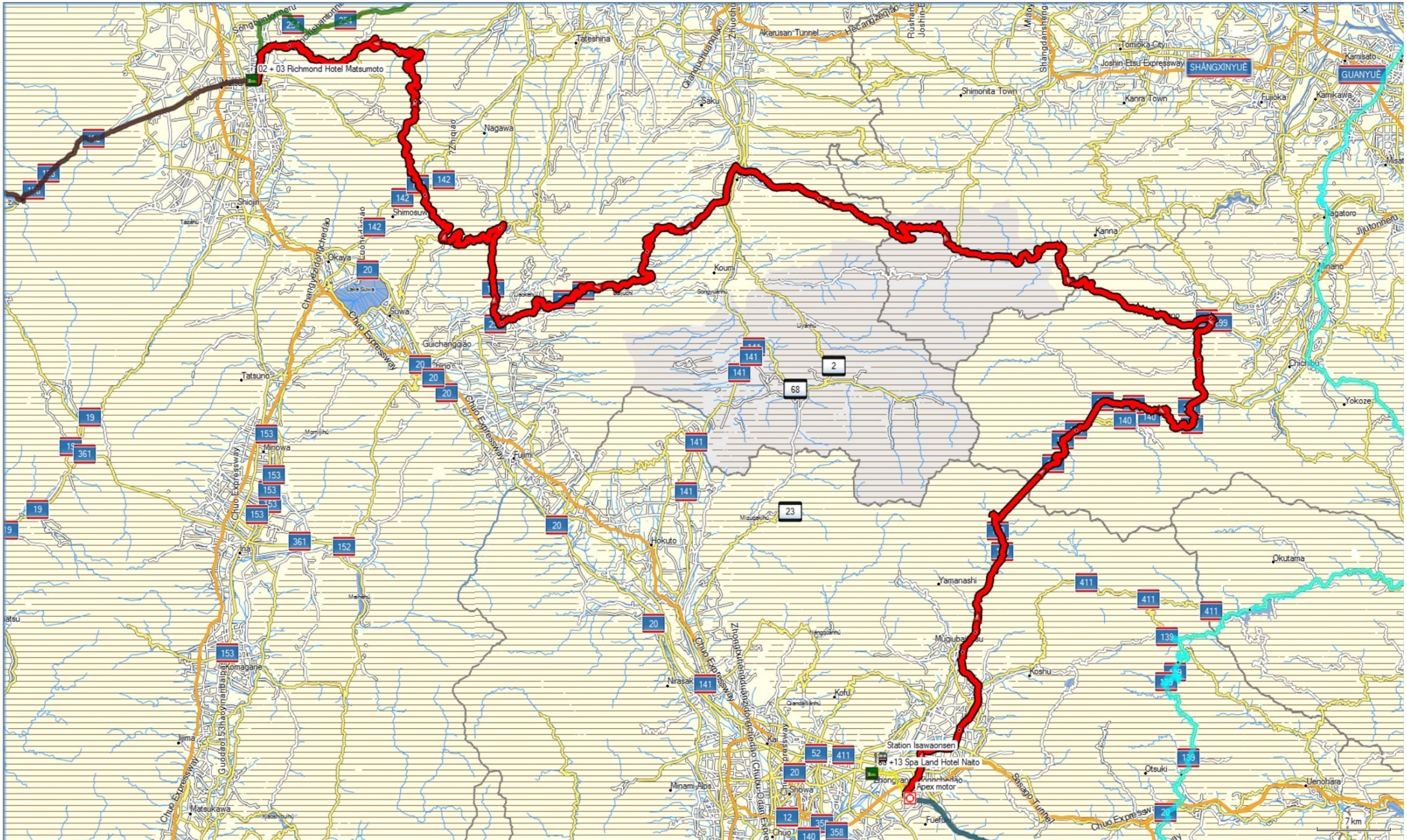
Japan on Motorcycle

These maps are produced using Garmin MapSource/ BaseCamp. The Japan maps were not available with Garmin, so used OpenStreetMaps in both computer and Zūmo's 550 and 590. It all operated flawlessly and it's for free.

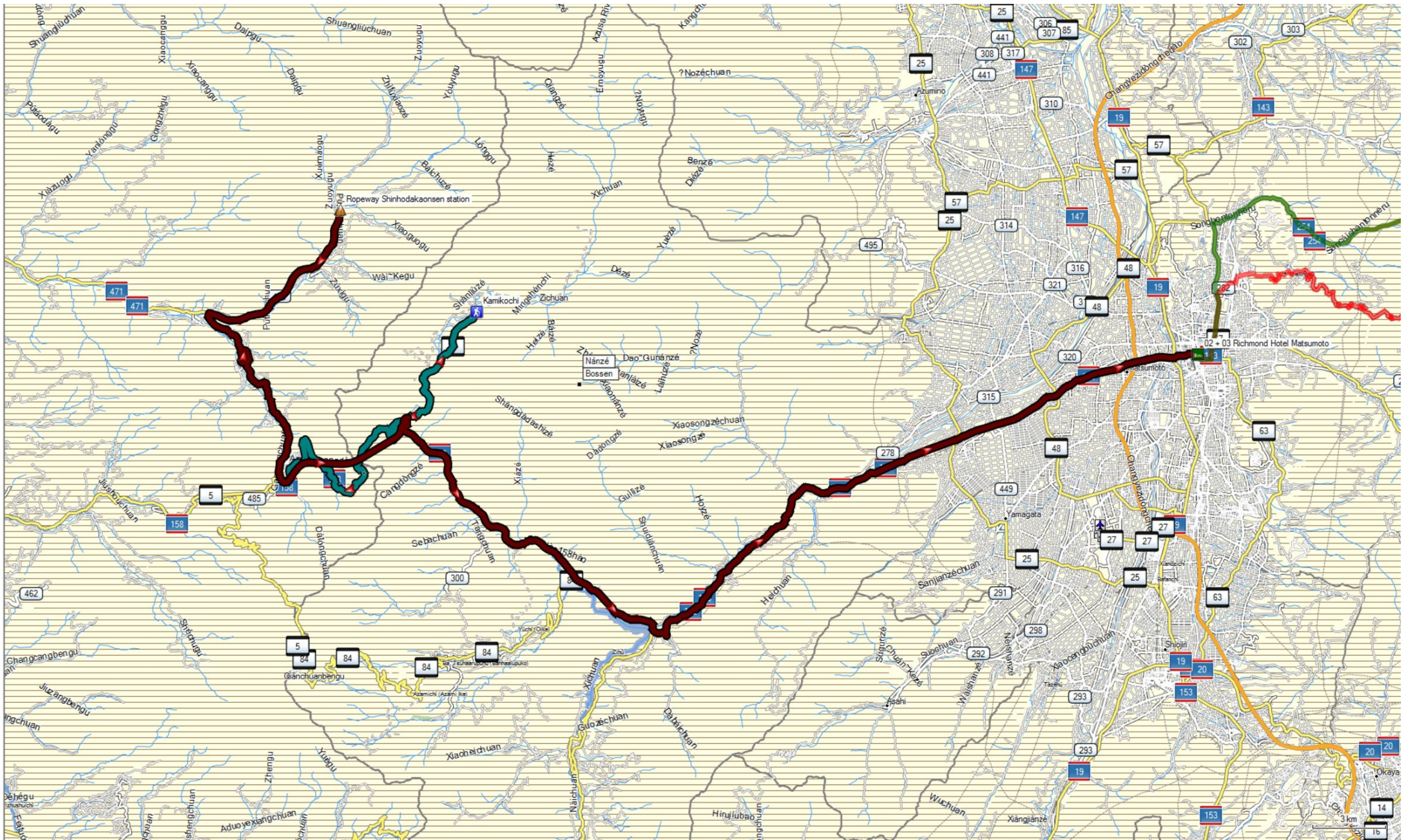


Dag 1

ApexMoto - Matsumoto



Dag 2
Matsumoto



Dag 3

Matsumoto - Nagaoke



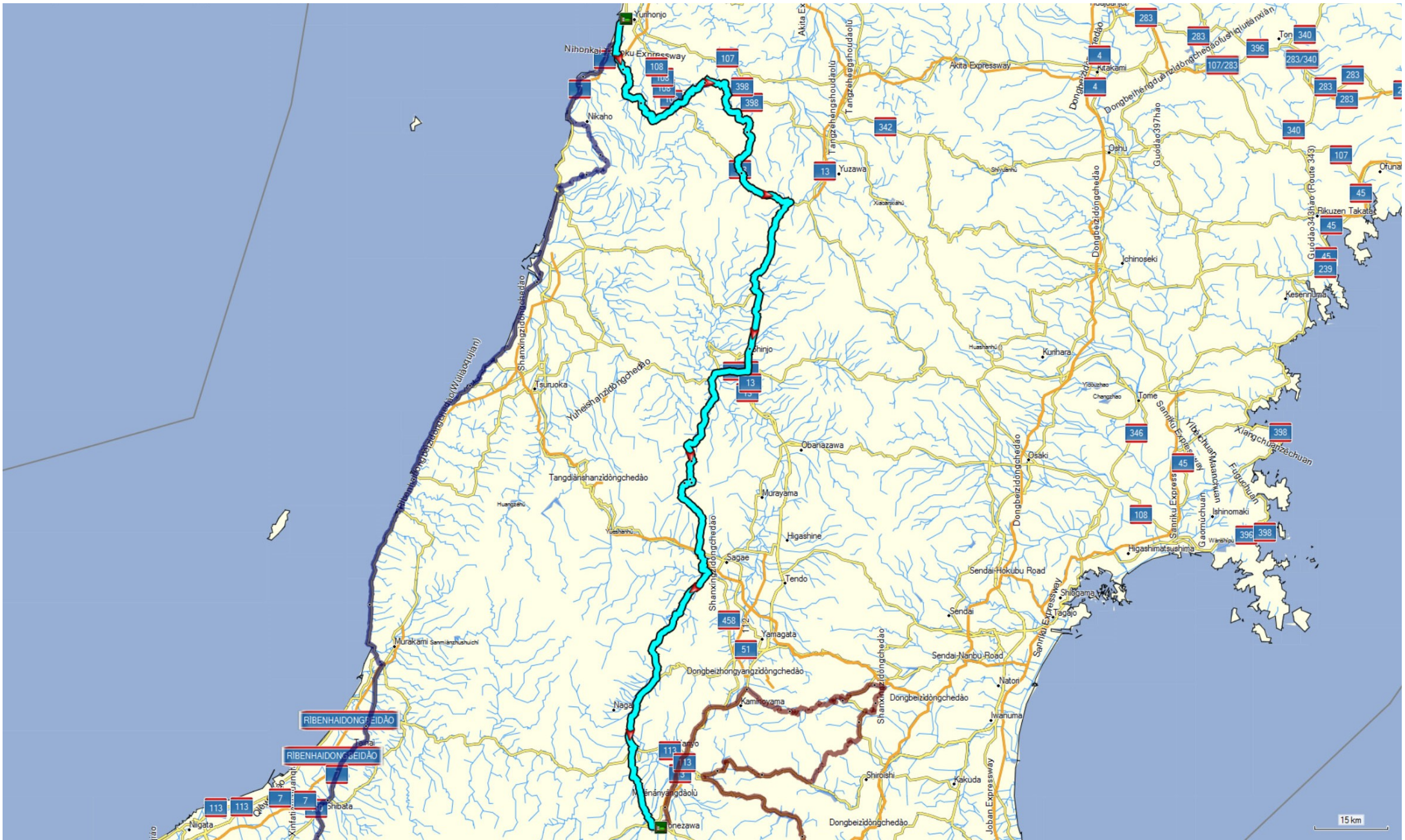
Dag 4

Nagaoke - Yurihonjo



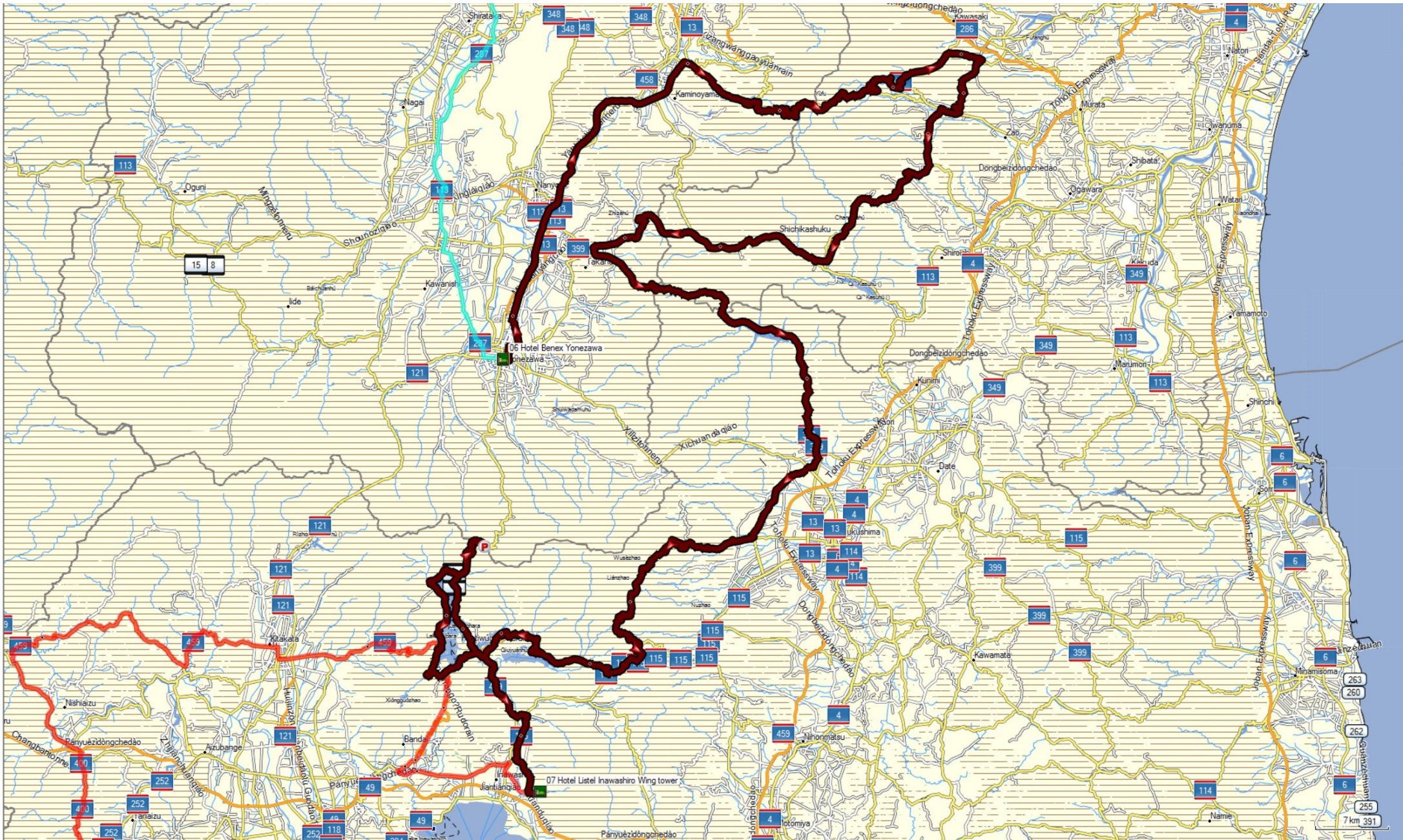
Dag 5

Yurihonjo - Yonezawa



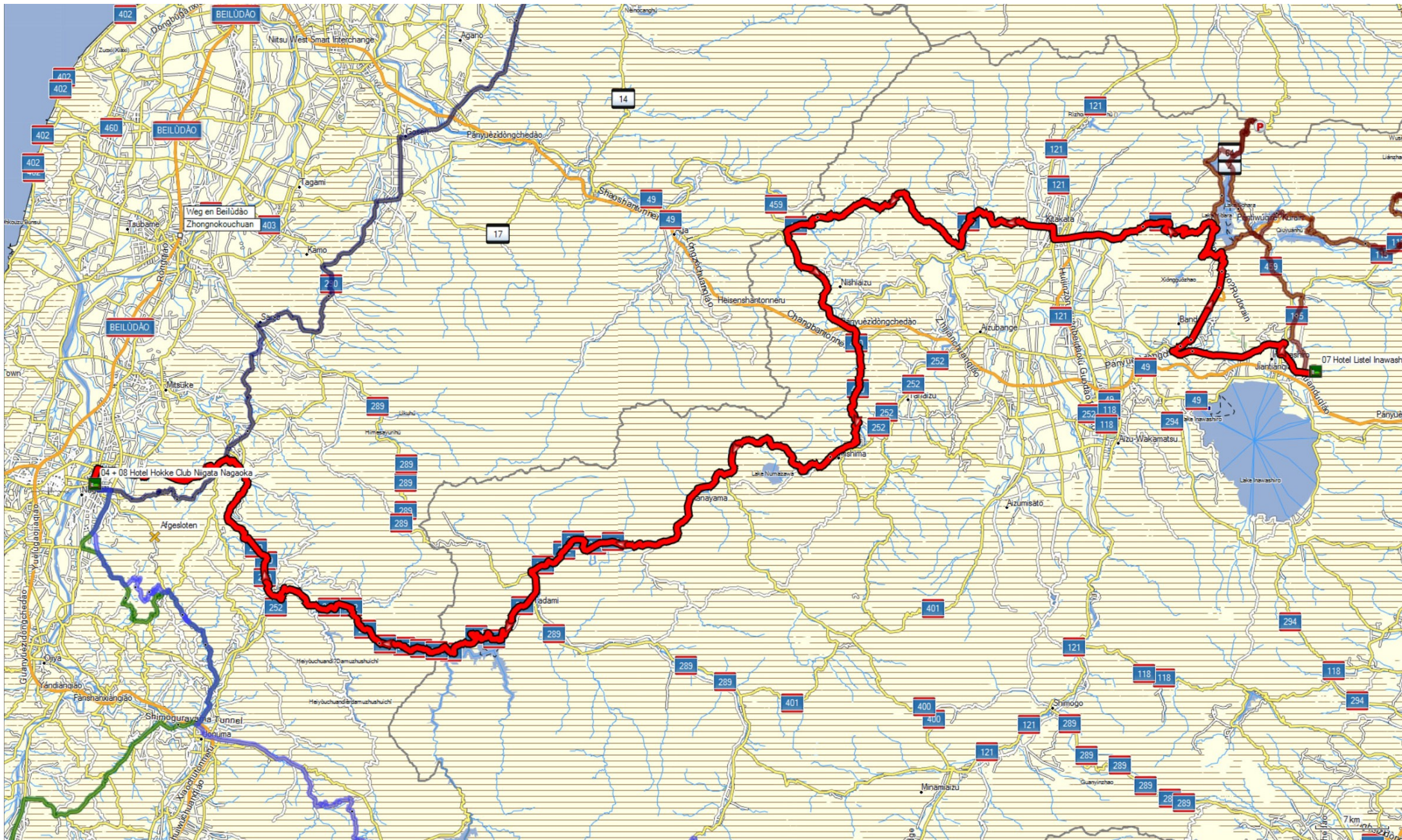
Dag 6

Yonezawa - Inawashiro



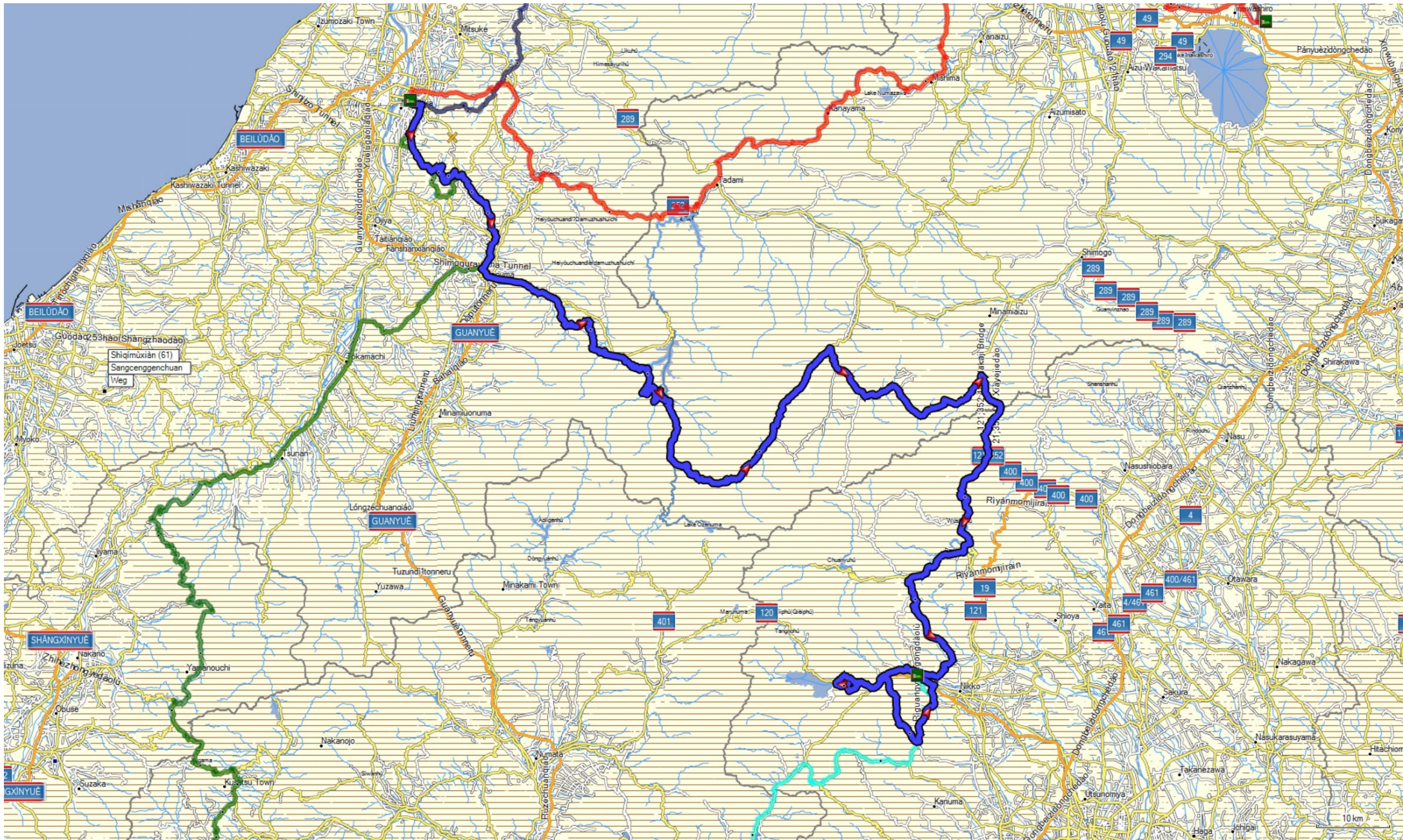
Dag 7

Inawashiro - Nagaoka



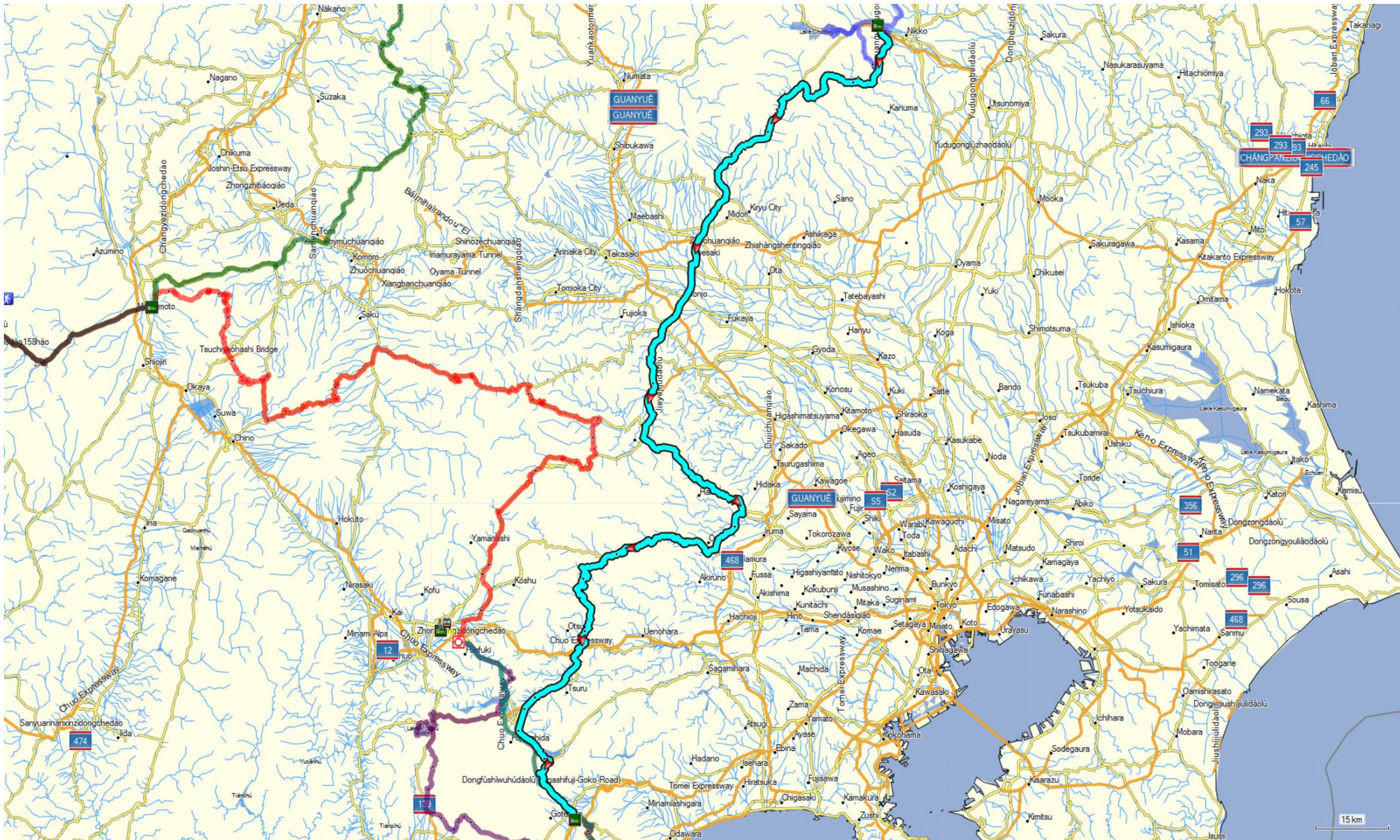
Dag 8

Nagaoke - Nikko



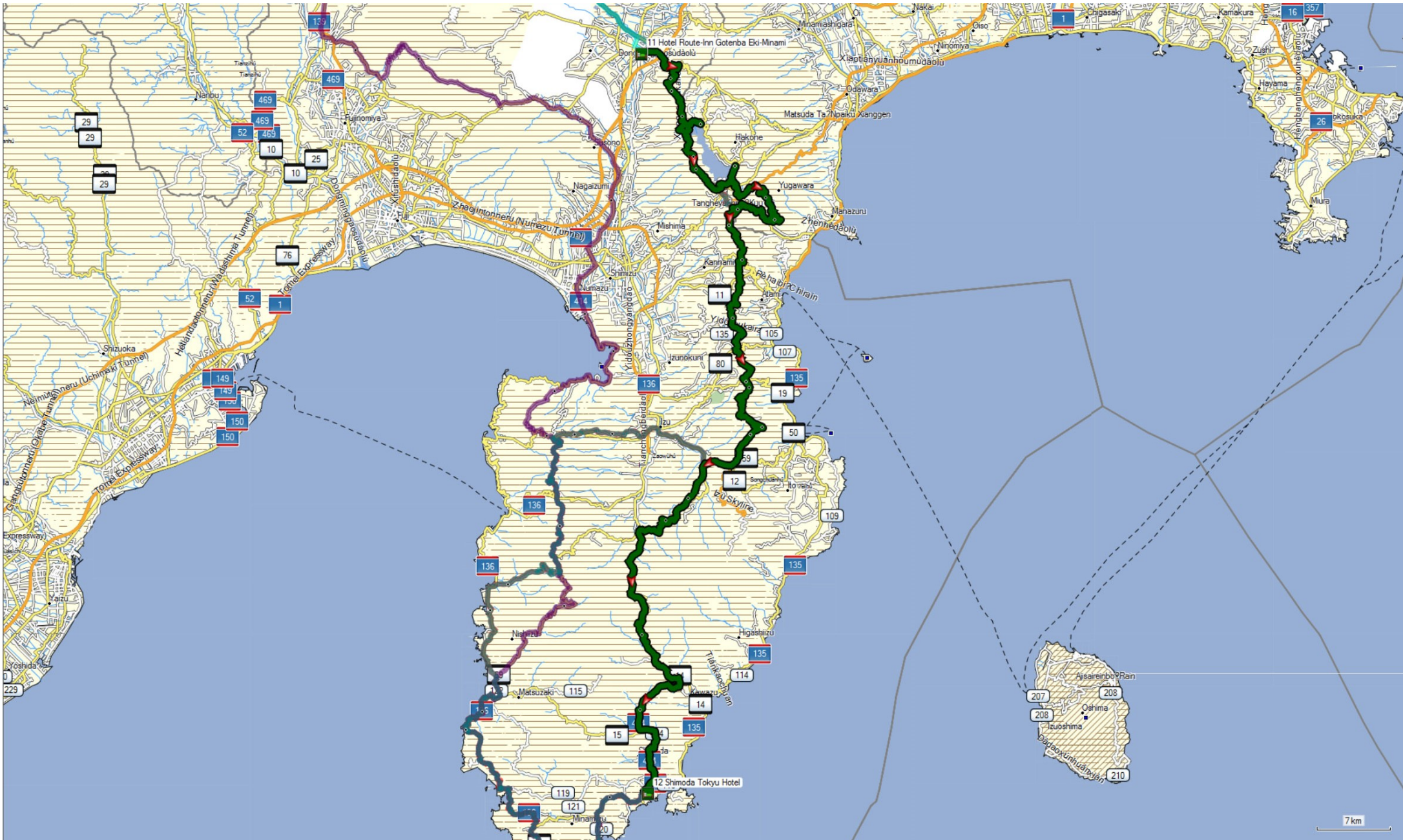
Dag 10

Nikko - Gotenba



Dag 11

Gotenba - Shimoda



Dag 12

Shimoda - ApexMoto

